

E-Field Generator

LRET-10K100M-S1

E-Field generator is the typical and core equipment which tests the radiation sensitivity of electric field in the electromagnetic compatibility test as transmitting antenna. Our E-Field generator products can meet the test requirements under MIL-STD-461 / GJB 151B standards.

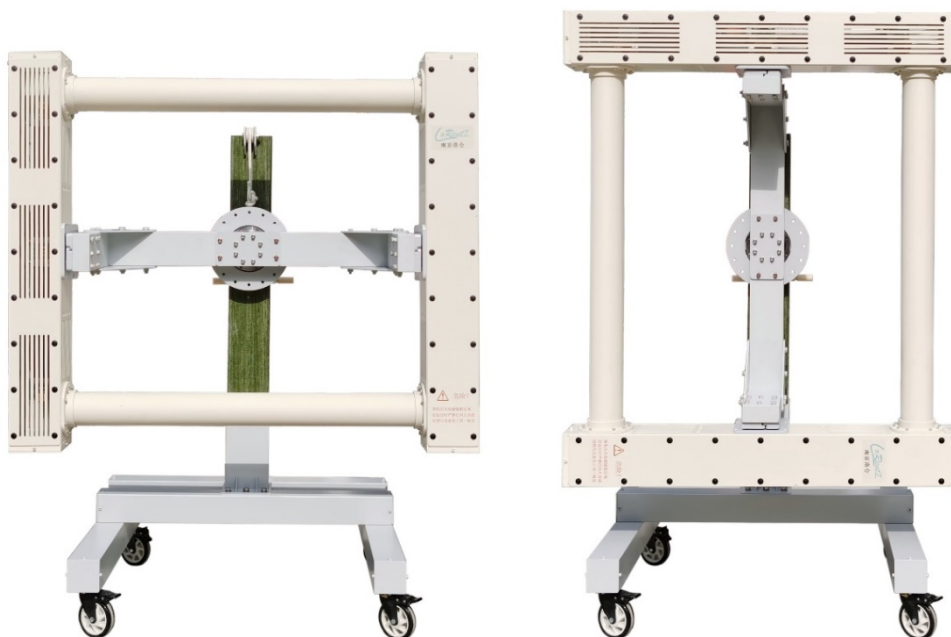


Electrical Data

Frequency range	10 kHz ~ 100 MHz
Impedance	50 Ω
VSWR	≤ 2.5
Max. power input	≤ 3000 W
Field strength	See picture
Polarization rotation	Yes (vertical polarization and horizontal polarization)

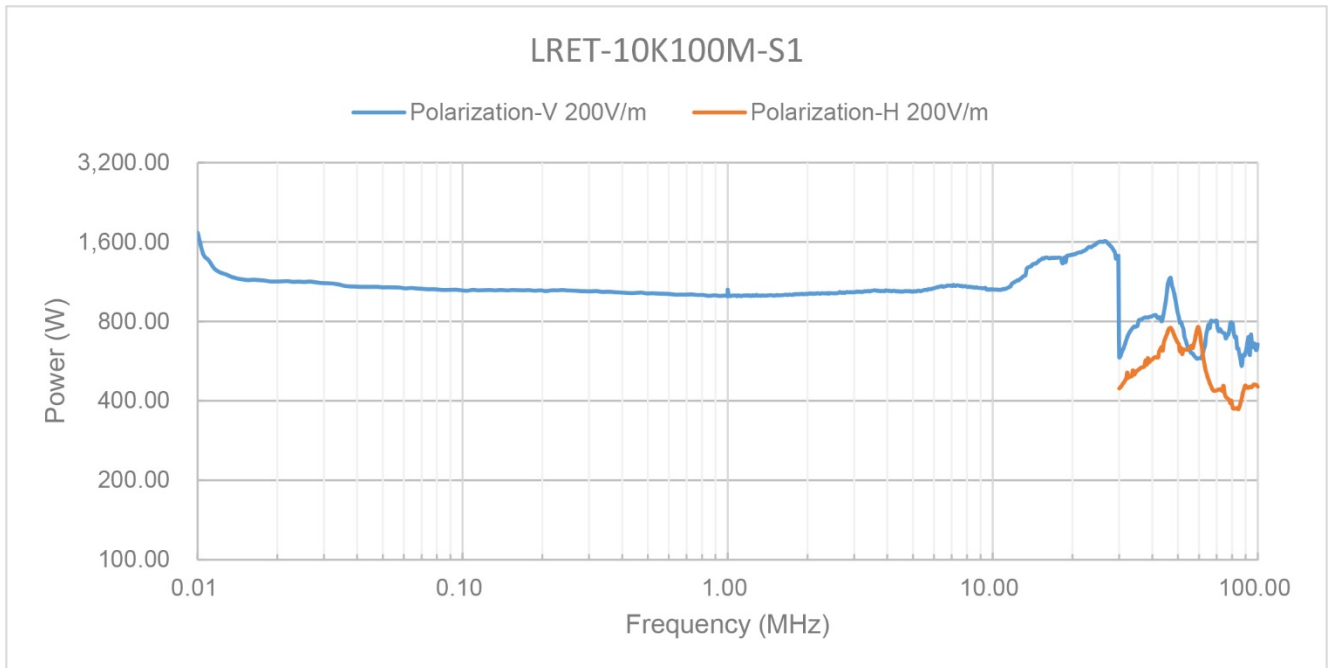
Mechanical Data

RF interface	7/16 female
Size	See outline drawings
Weight	76 kg

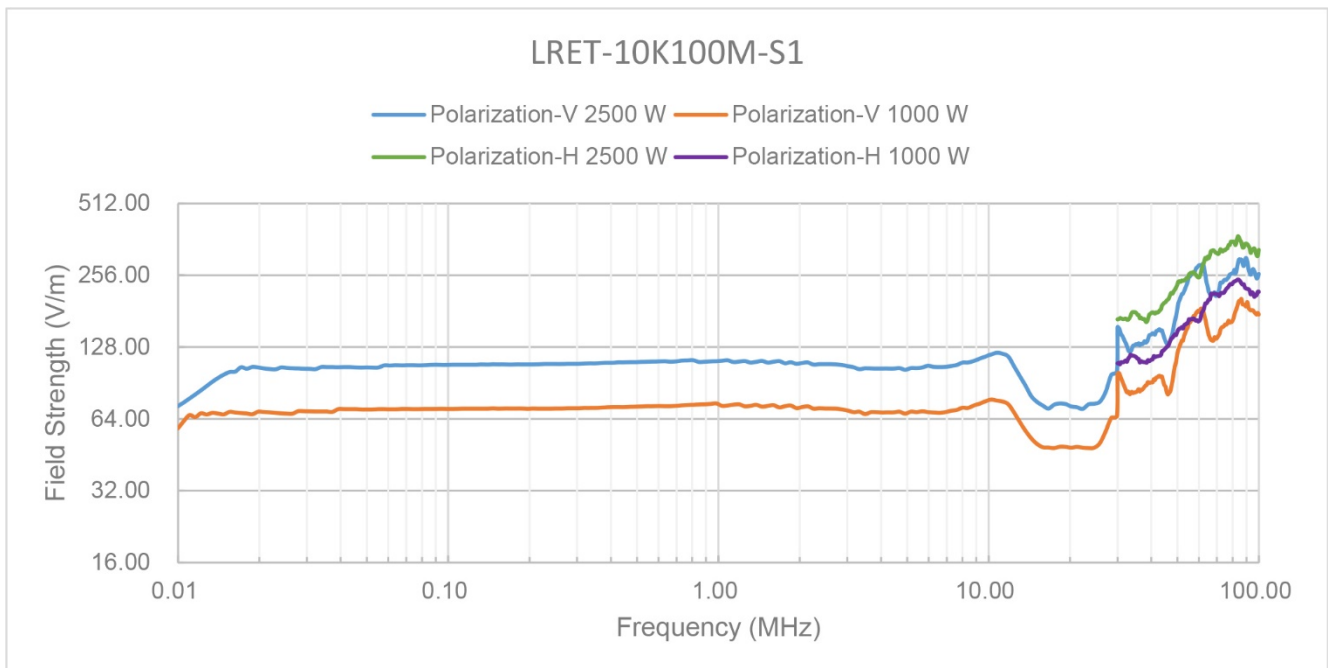


Picture 2 The vertical polarization station (left) and horizontal polarization station (right) of LRET-10K100M-S1

Typical Measured Data

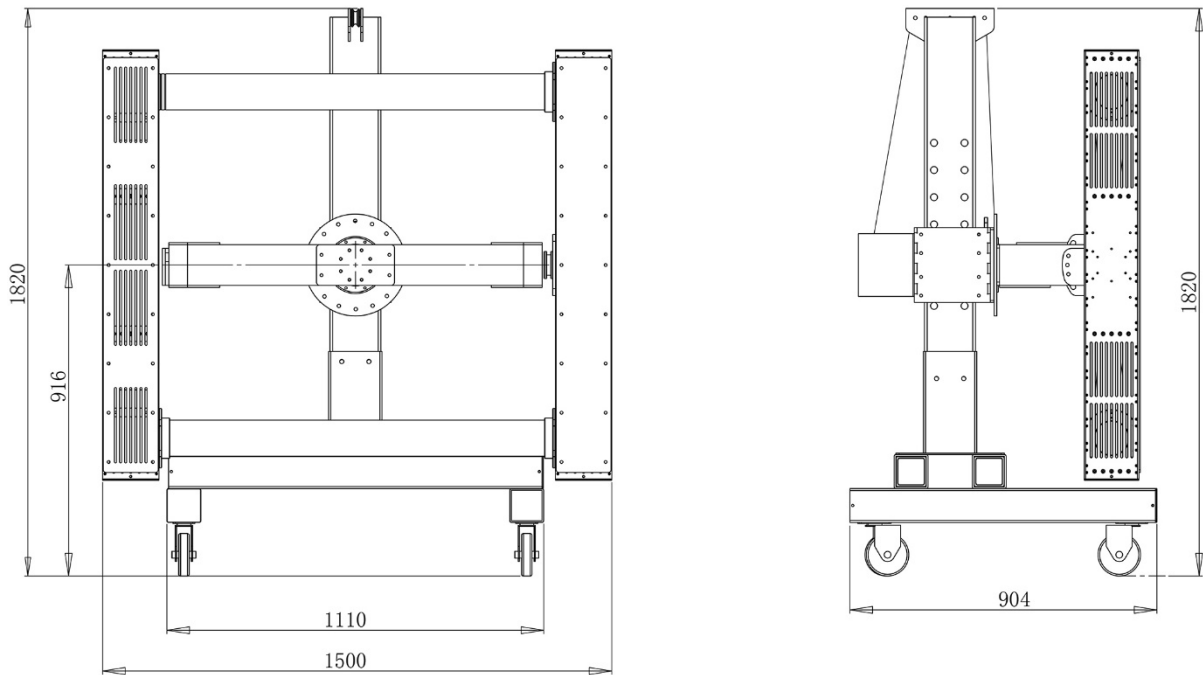


Picture 2 LRET-10K100M-S1 power curve at field strength of 200 V/m (Testing distance: 0.5m)

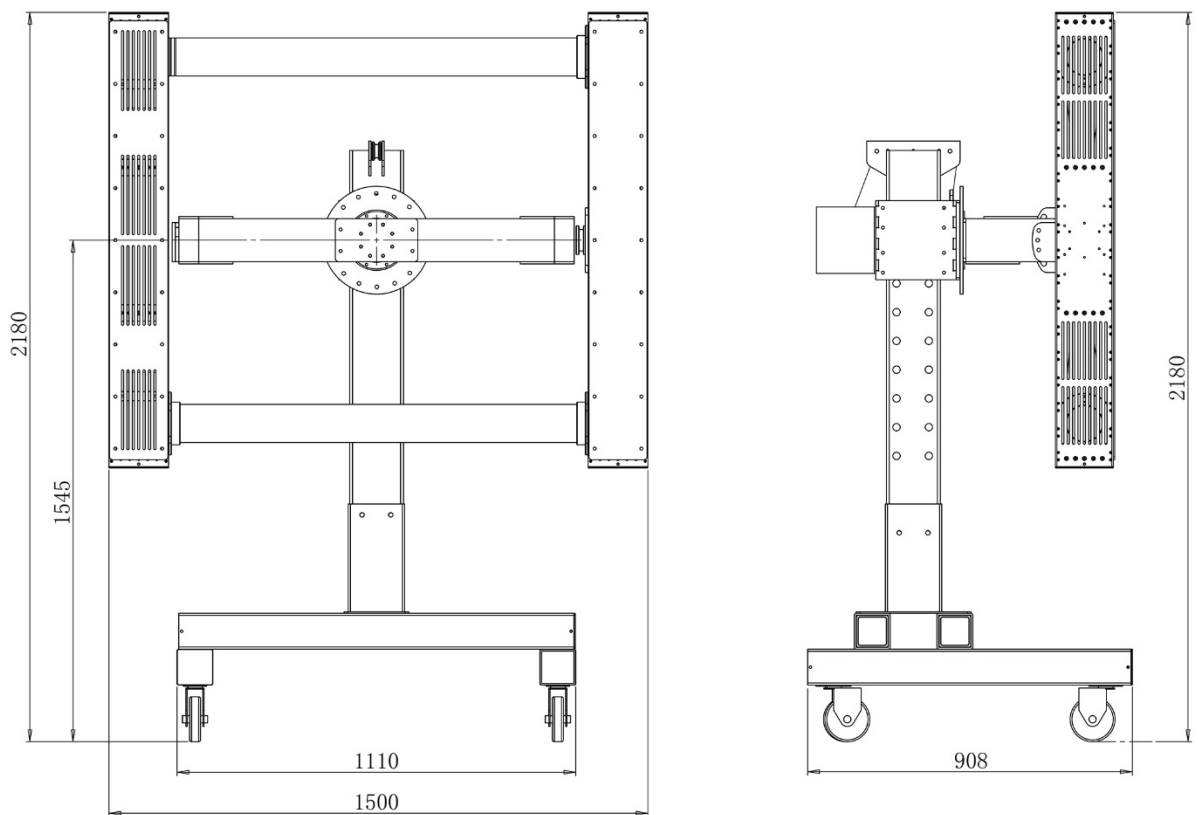


Picture 3 The field strength curve of LRET-10K100M-S1 (Testing distance: 1m)

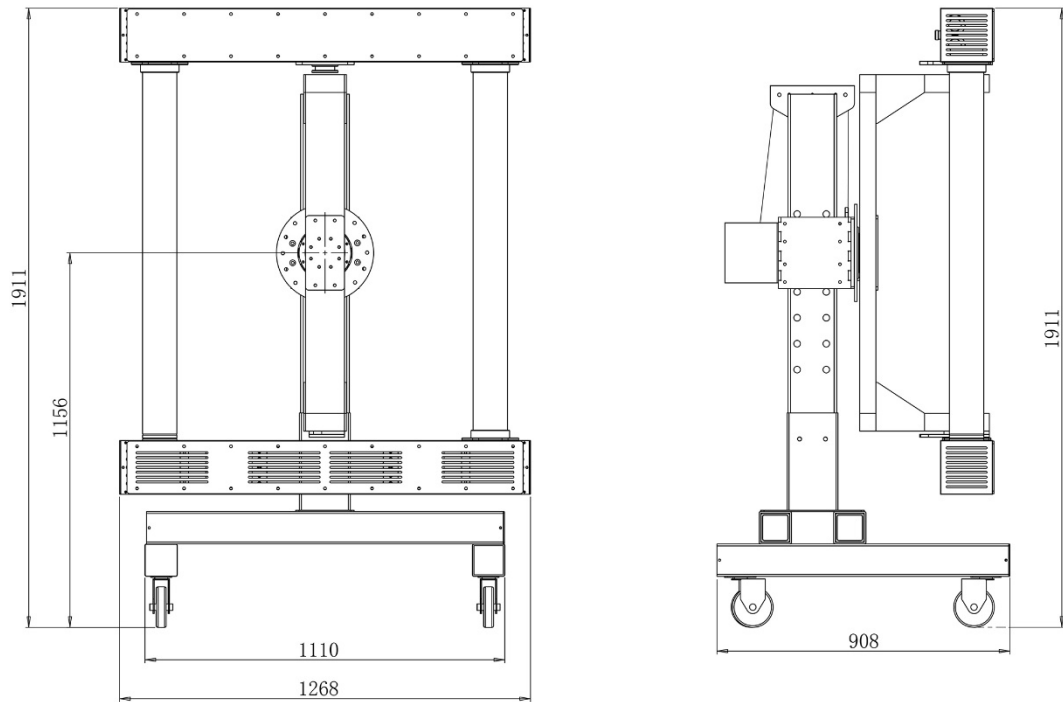
Outline Drawings



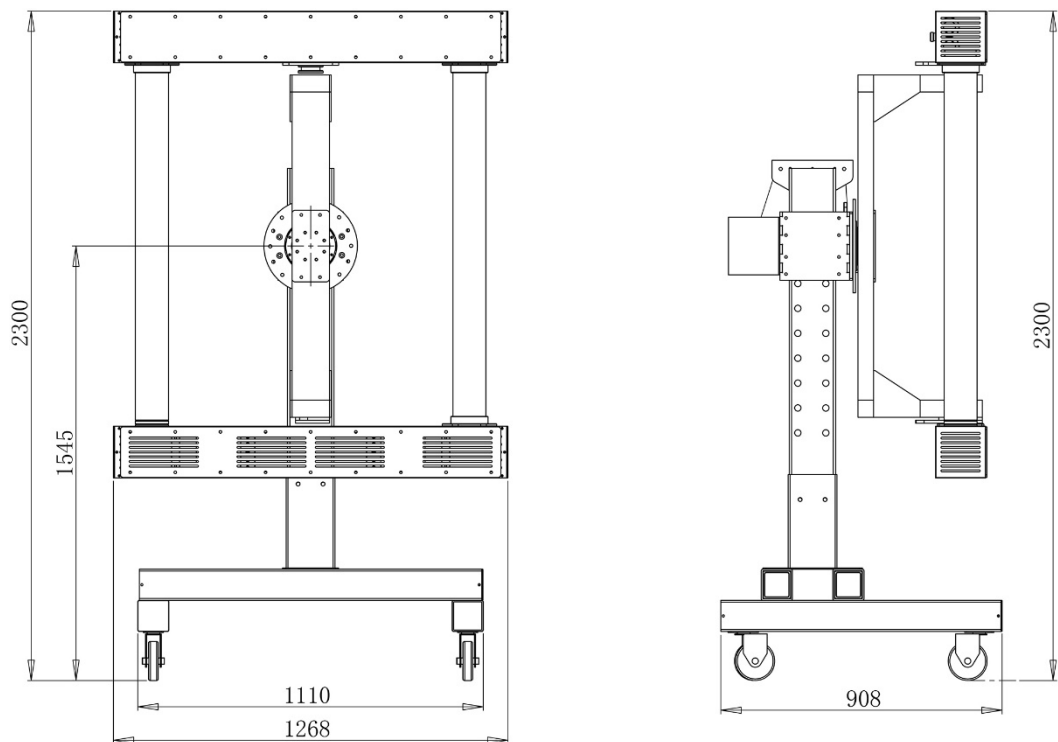
Picture 4 The outline drawing of LRET-10K100M-S1 with vertical polarization station (1)



Picture 5 The outline drawing of LRET-10K100M-S1 with vertical polarization station (2)



Picture 6 The outline drawing of LRET-10K100M-S1 with horizontal polarization station (1)



Picture 7 The outline drawing of LRET-10K100M-S1 with horizontal polarization station (2)

Ordering Information

Base unit

LRET-10K100M-S1: E-field Generator, 10 kHz ~ 100 MHz, 3000 W, 7/16 female

Options